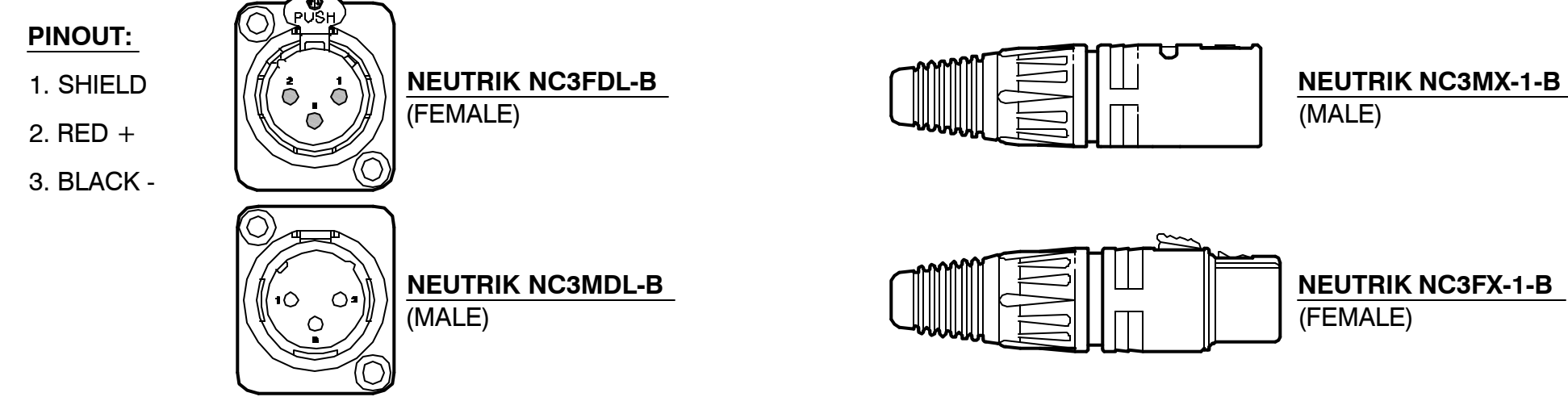


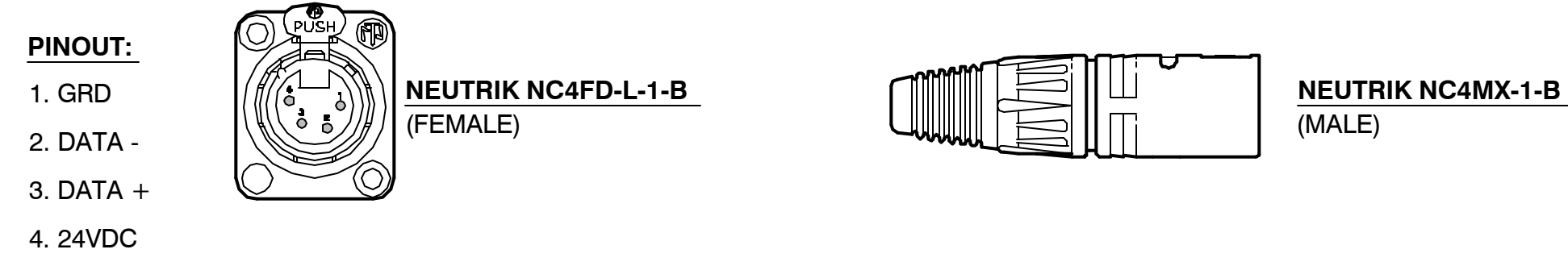
**1** TYPICAL XLR AUDIO CONNECTORS

AV0.01 SCALE: N/A



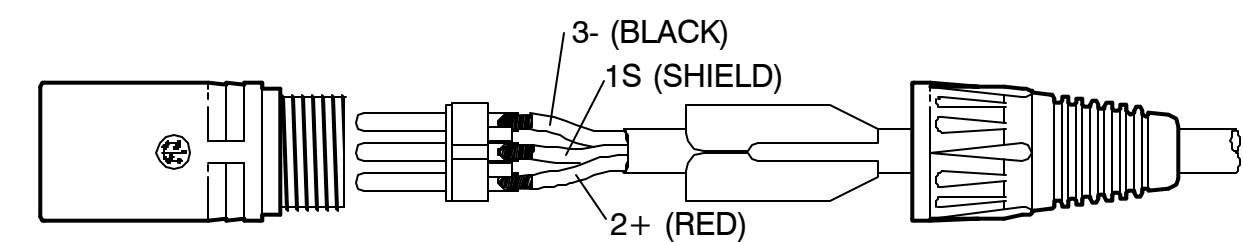
**2** NEUTRIK NC4FD-L-1-B (CRESTRON CONTROL BUS)

AV0.01 SCALE: N/A



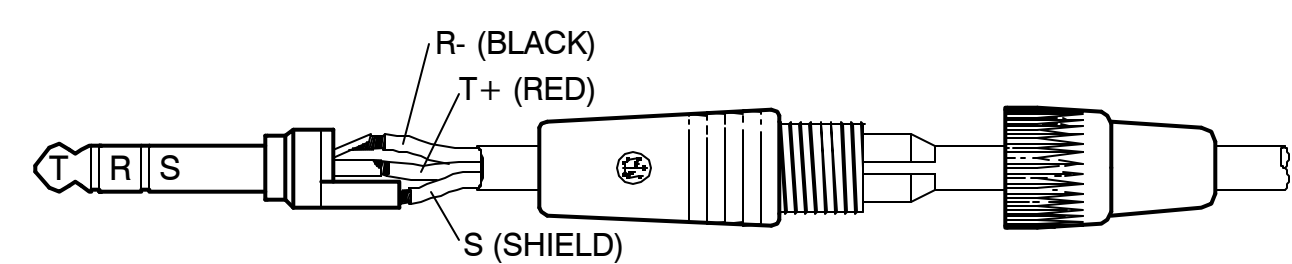
**3** TYPICAL WIRING FOR NEUTRIK NC3MX-1-B (BALANCED)

AV0.01 SCALE: N/A



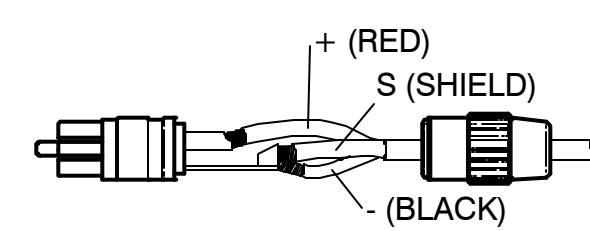
**4** TYPICAL WIRING FOR 1/4" TRS PHONE PLUG (BALANCED)

AV0.01 SCALE: N/A



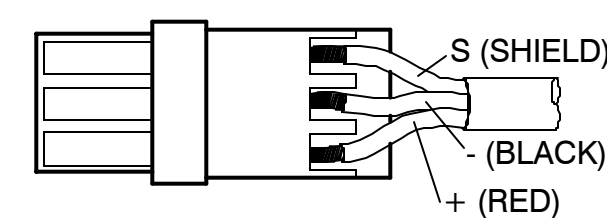
**5** TYPICAL WIRING FOR A RCA PLUG

AV0.01 SCALE: N/A



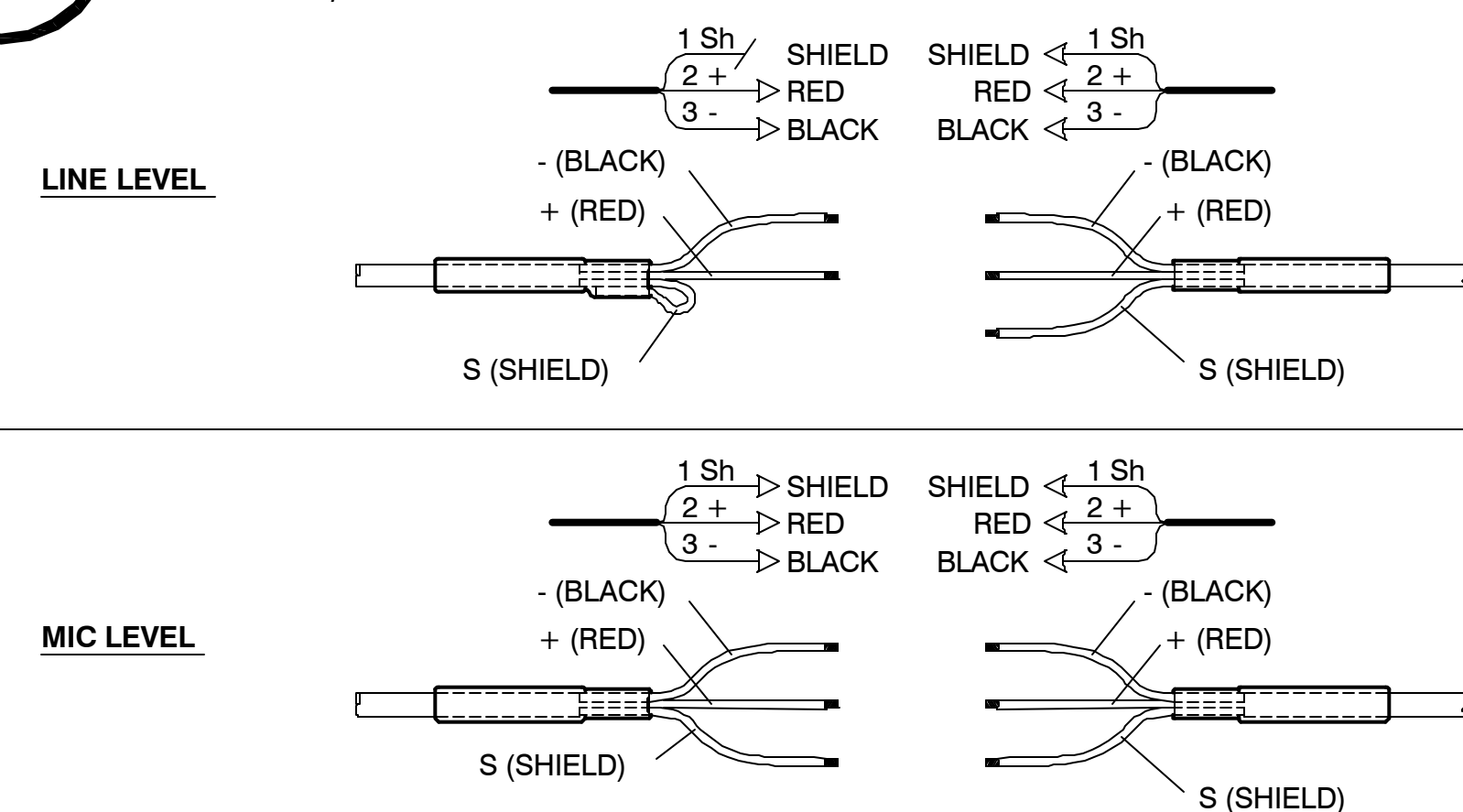
**6** TYPICAL WIRING FOR BLOCK CONNECTOR TERMINAL

AV0.01 SCALE: N/A



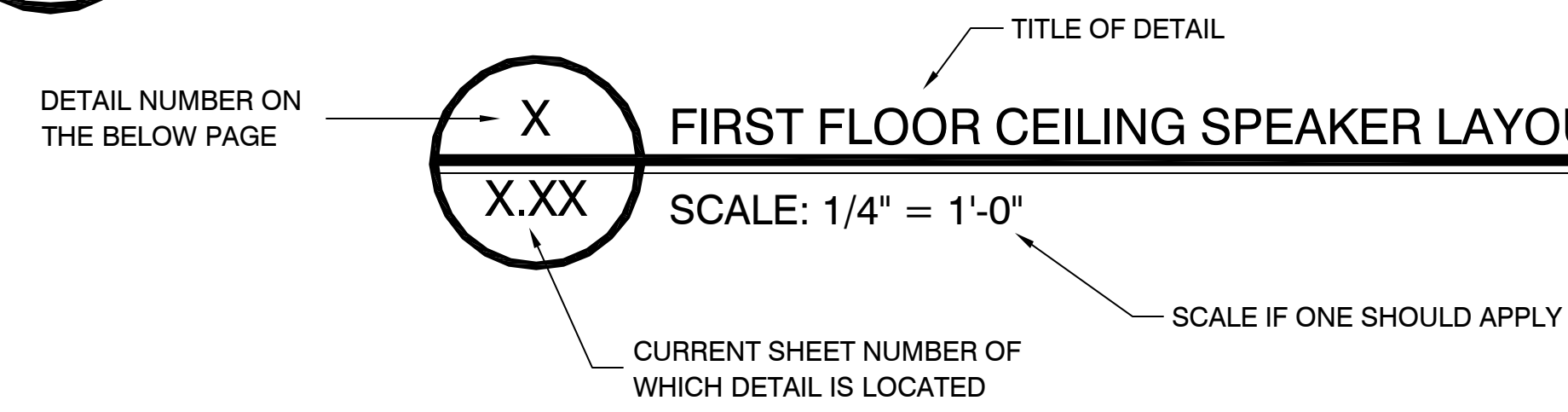
**7** TYPICAL WIRE TERMINATIONS MADE DIRECTLY ON UNIT

AV0.01 SCALE: N/A



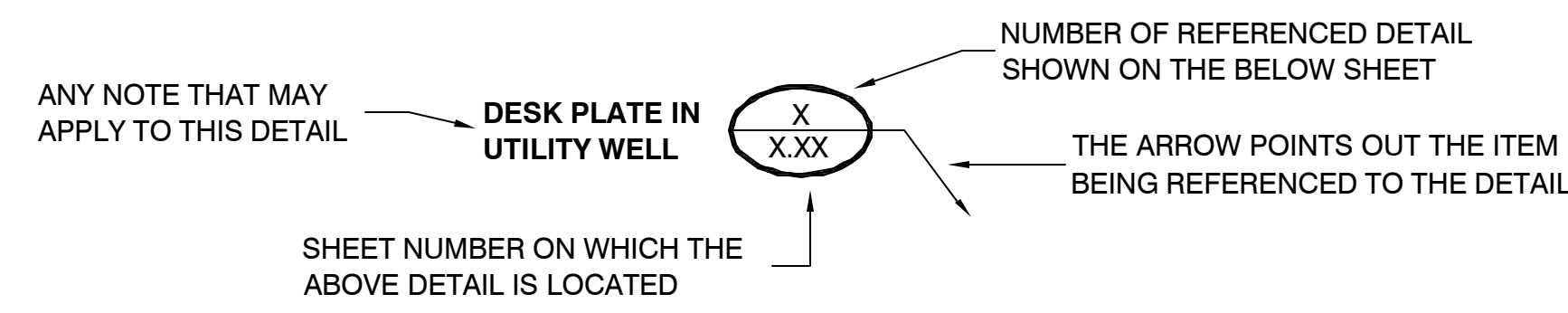
**8** DETAILED DESCRIPTION AND TITLE EXPLANATION

AV0.01 SCALE: N/A



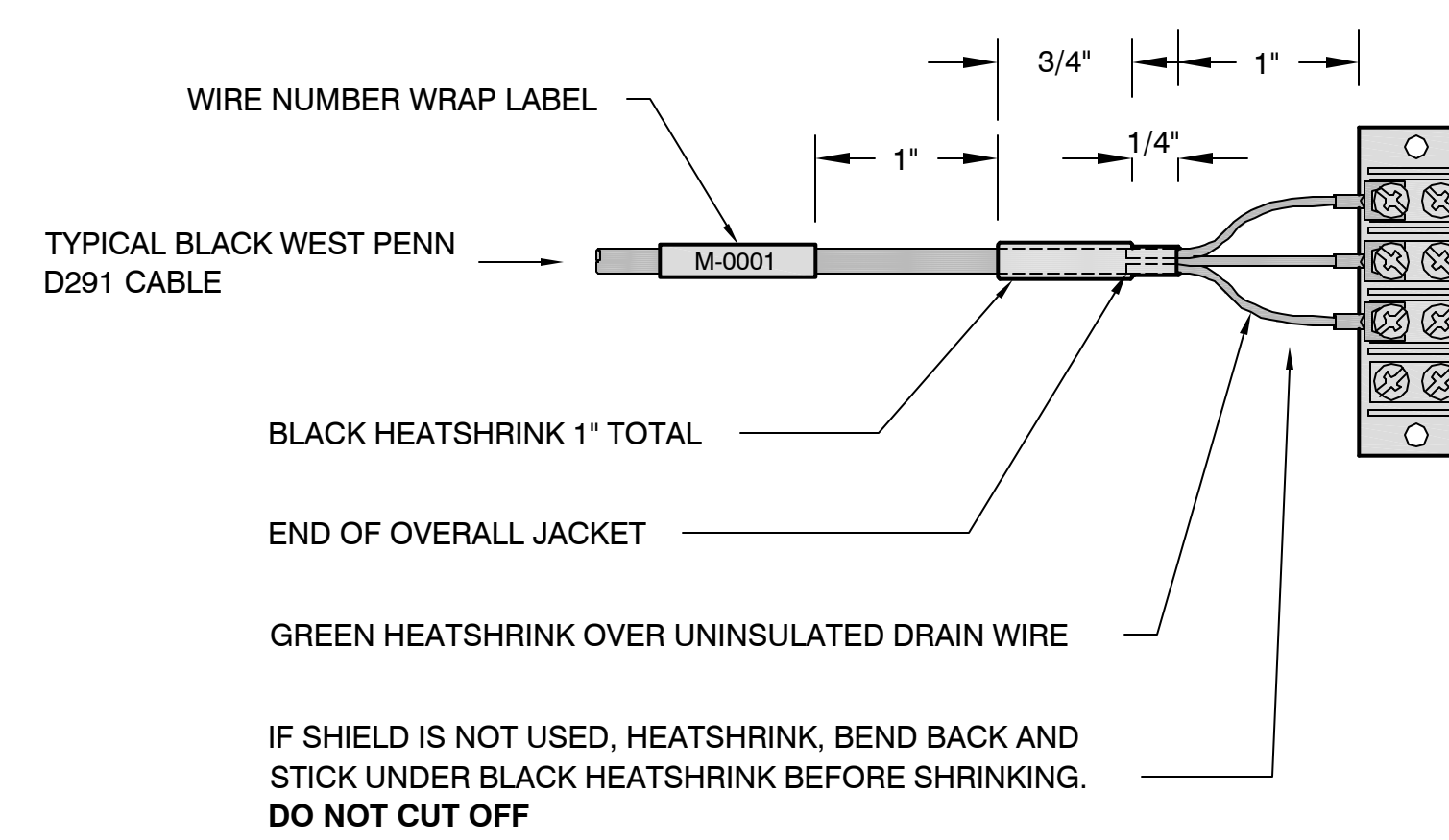
**9** DETAILED REFERENCE NOTE EXPLANATION

AV0.01 SCALE: N/A



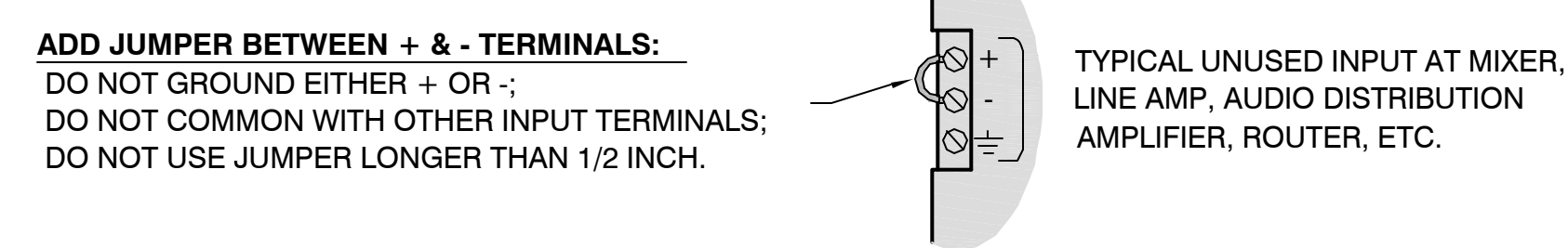
**10** CABLE DRESS DETAIL AND LABEL

AV0.01 SCALE: N/A



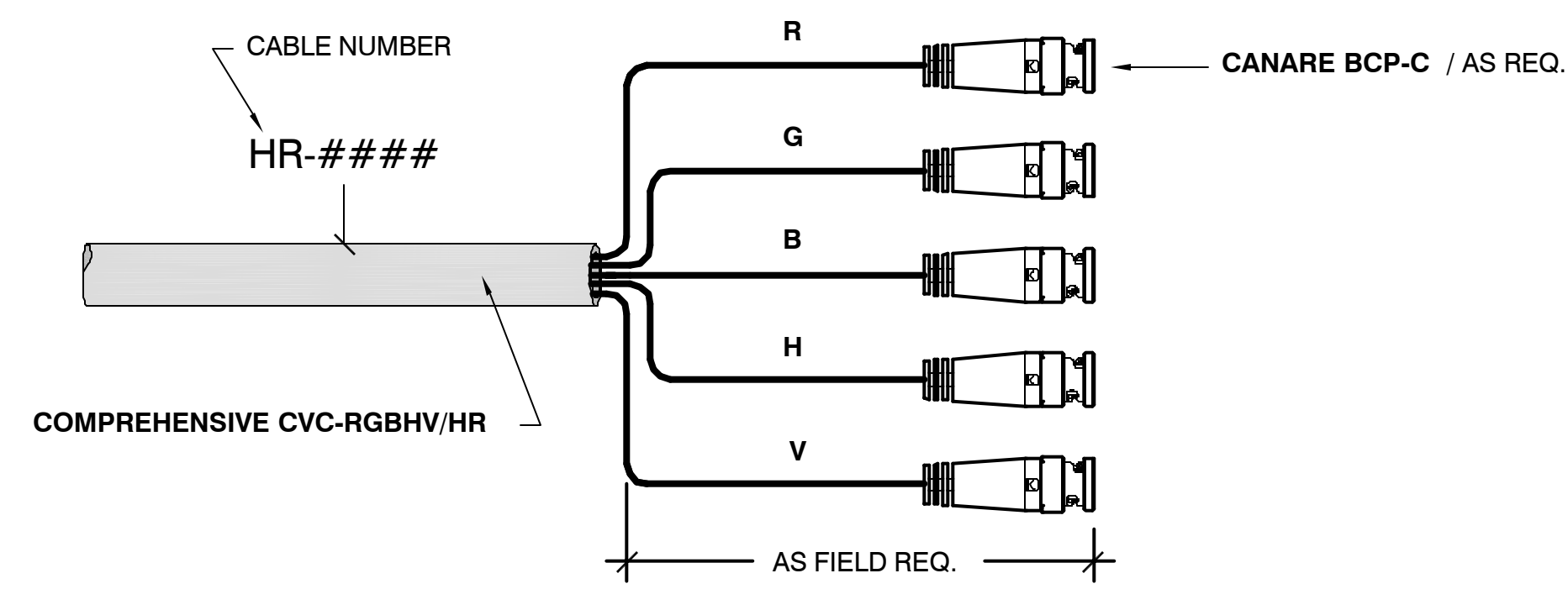
**11** DETAIL OF SHORTED AUDIO INPUT

AV0.01 SCALE: N/A



**12** TYPICAL RGBHV COAX CONNECTION

AV0.01 SCALE: N/A



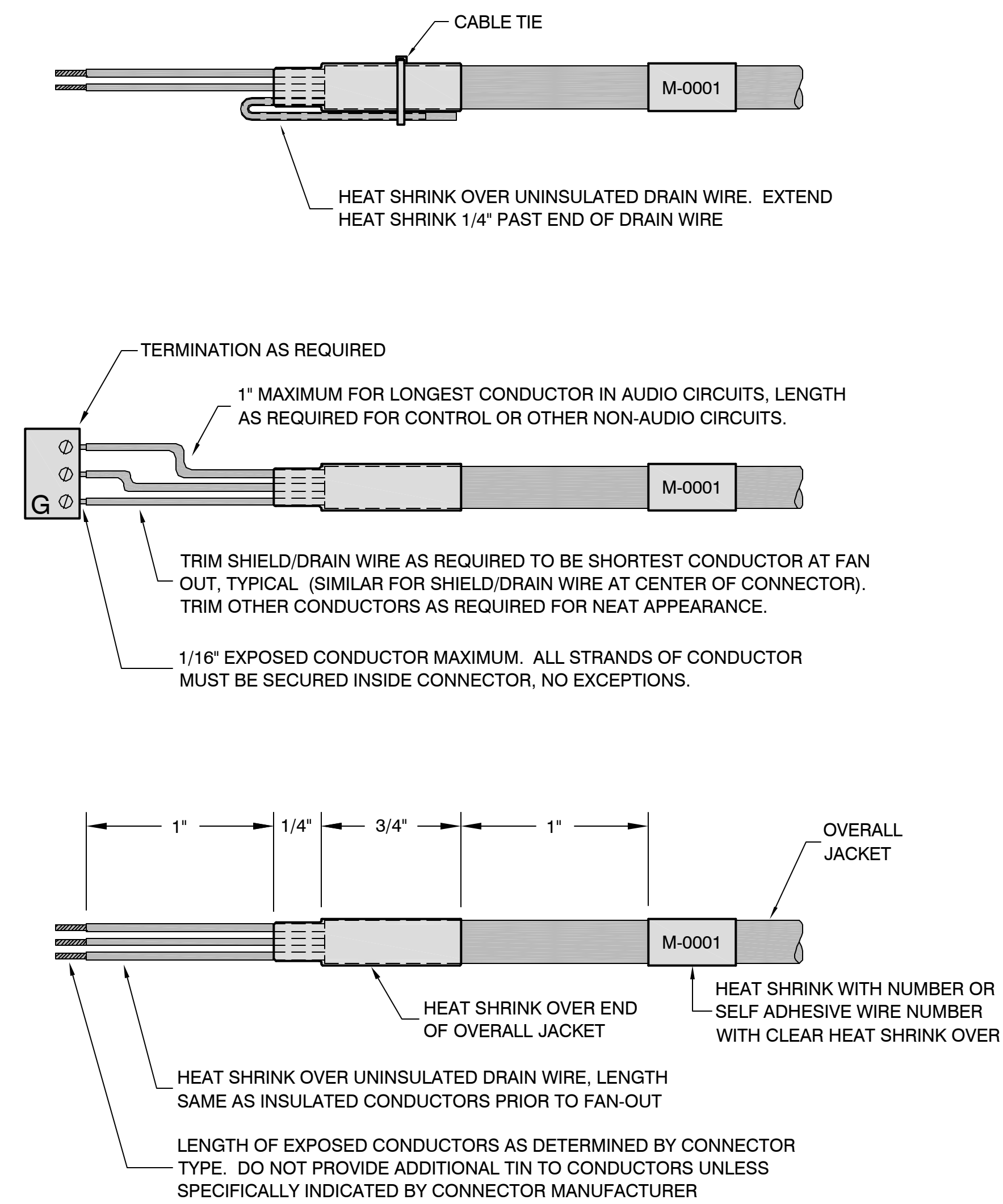
**NOTE:** WHEN WIRING WITH THIS CABLE, DO NOT STRIP THE LARGE OUTER JACKET FROM THE CABLE. HEATSHRINK AND DRESS LIKE AUDIO CABLES.

**13** STANDARD TERMINATION OF SHIELDED TWISTED PAIR CABLE (UNSHIELDED CABLE SIMILAR)

AV0.01 SCALE: N/A

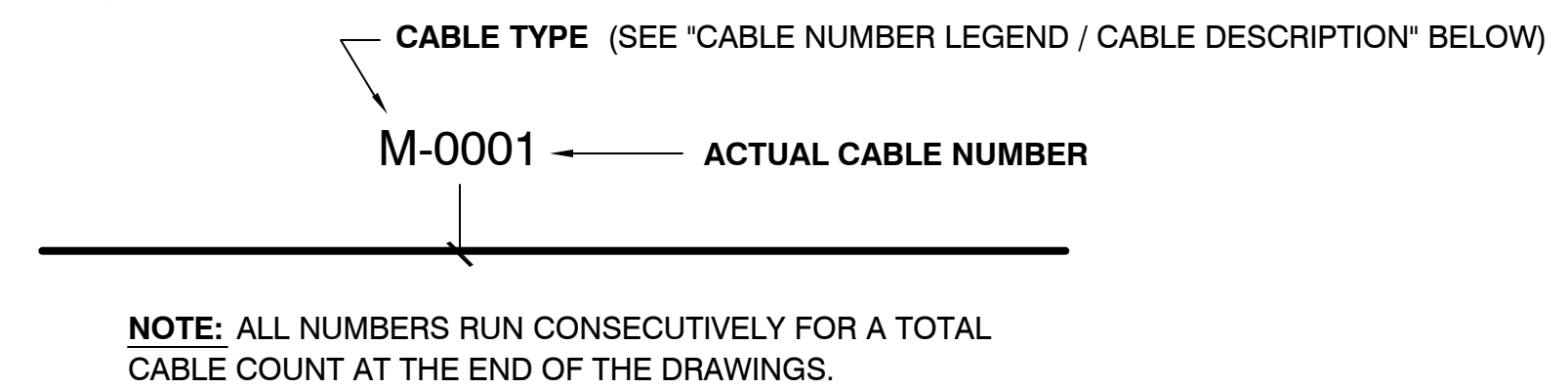
**NOTE 1:** THIS DETAIL APPLIES TO CABLES WITHOUT CONNECTORS (FIXED COMPRESSION FITTINGS) OR CONNECTORS WITHOUT OVERALL SHELLS (SPADE LUGS, RING TERMINALS, REMOVABLE COMPRESSION FITTINGS, ETC.).

**NOTE 2:** FOR CONNECTORS WITH OVERALL SHELLS (XLR, 1/4" PHONE, ELCO, ETC.), DELETE HEAT SHRINK OVER UNINSULATED DRAIN WIRE AND HEAT SHRINK OVER END OF OVERALL JACKET. TRIM CONDUCTORS & DRAIN WIRE TO MINIMUM LENGTH BEYOND OVERALL JACKET. INSTALL WIRE NUMBER NO MORE THAN 1" BEYOND EXIT OF OVERALL SHELL.



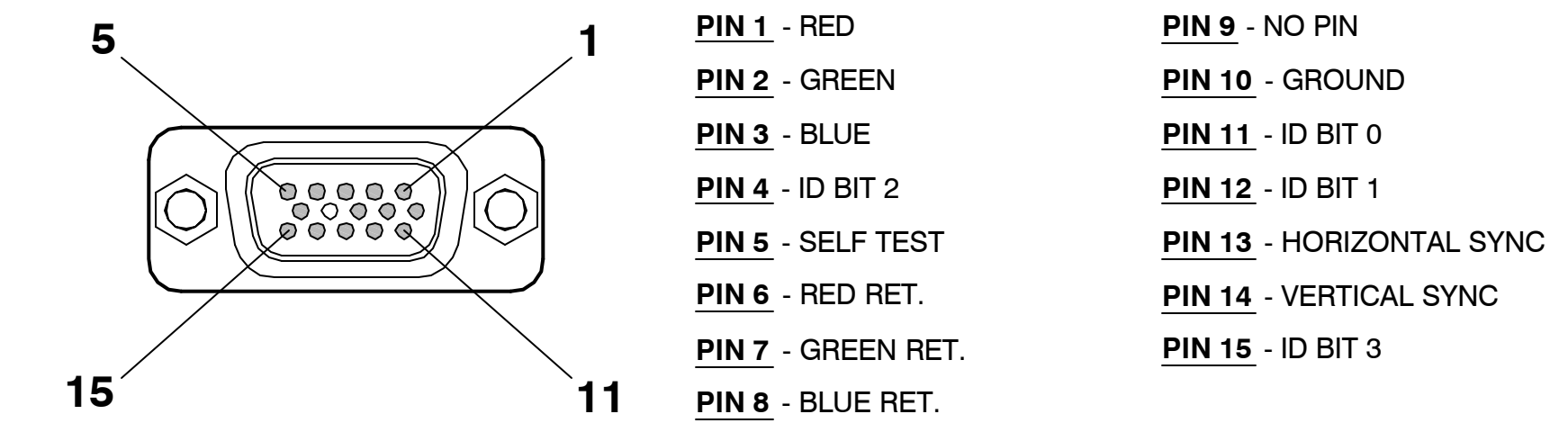
**14** CABLE NUMBER EXPLANATION

AV0.01 SCALE: N/A



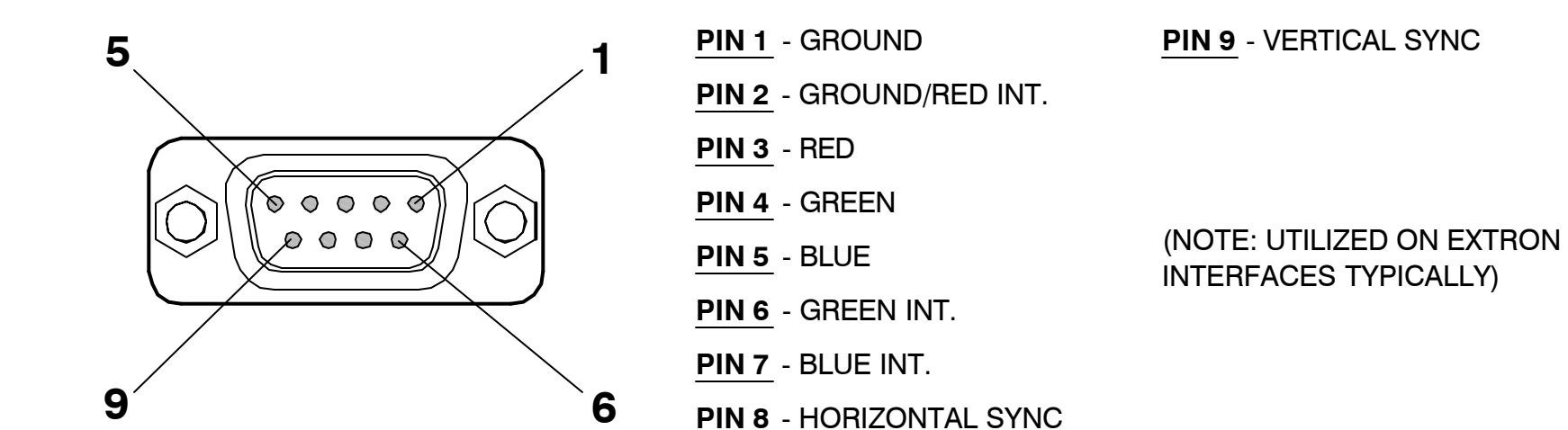
**15** TYPICAL ANALOG VGA/XGA HD15 CONNECTOR PIN-OUT

AV0.01 SCALE: N/A



**16** TYPICAL ANALOG VGA 9-PIN UNIVERSAL CONNECTOR PIN-OUT

AV0.01 SCALE: N/A



PROJECT

SHEET TITLE

A/V DETAILS AND EXAMPLES

DATE: 06-24-05

DRAWN BY: RMH

CHECKED BY: -

REVISIONS

| DATE     | BY  | CK'D |
|----------|-----|------|
| 07-10-05 | RMH | -    |
| 07-20-05 | RMH | -    |
| 08-19-05 | RMH | -    |
| 09-16-05 | RMH | -    |
| 11-03-05 | RMH | -    |

JOB#: XXXX

AV0.01