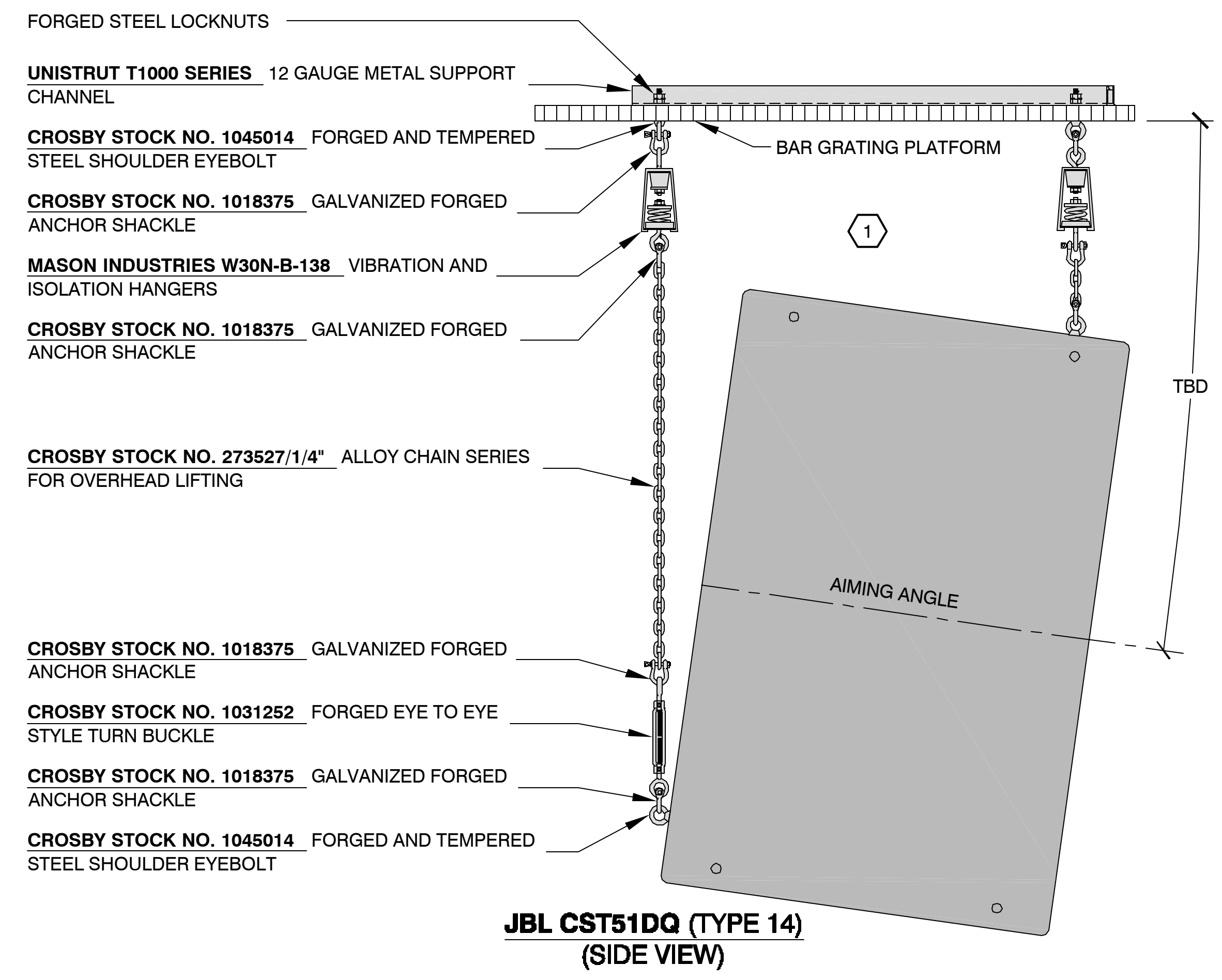
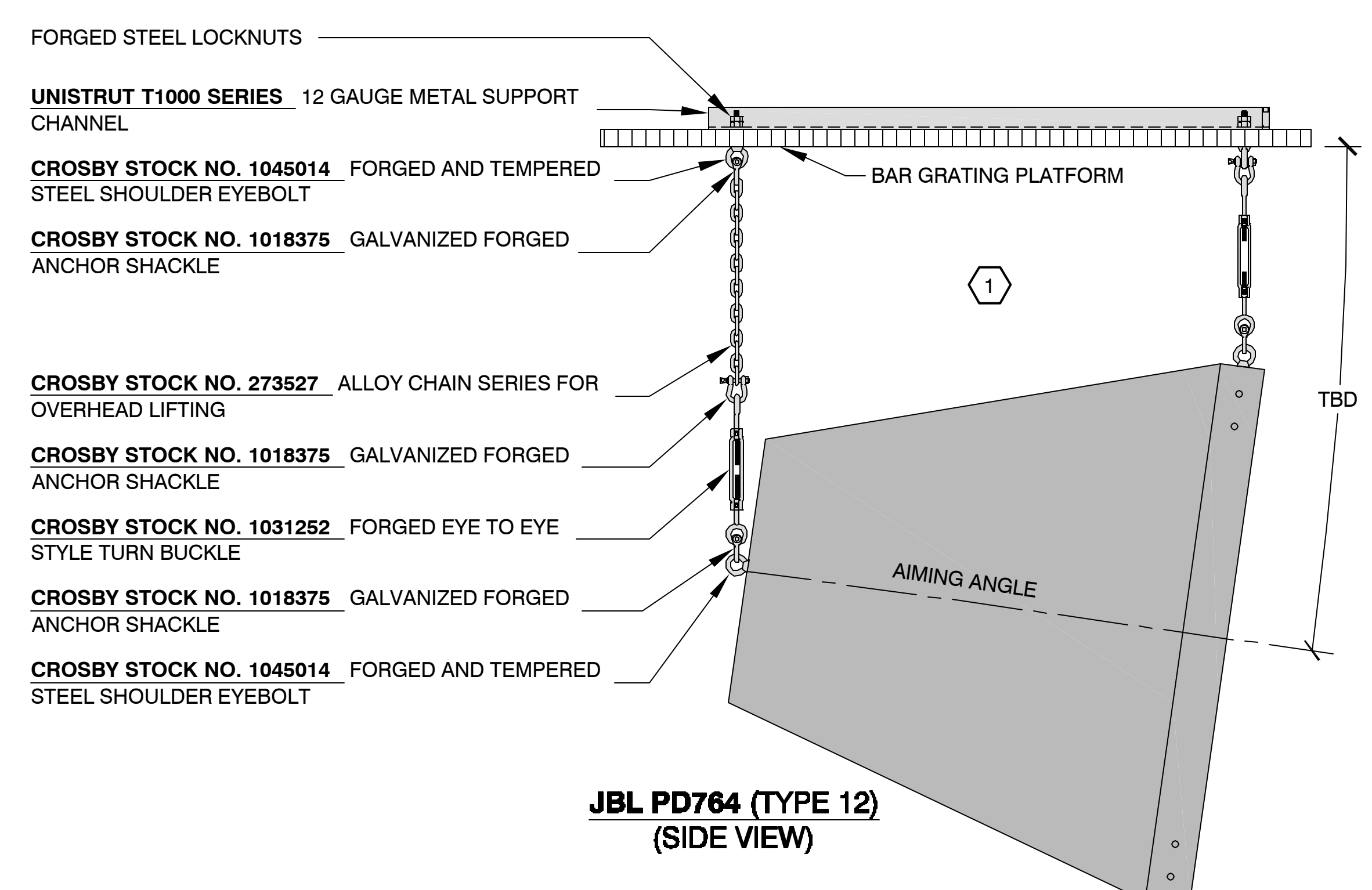


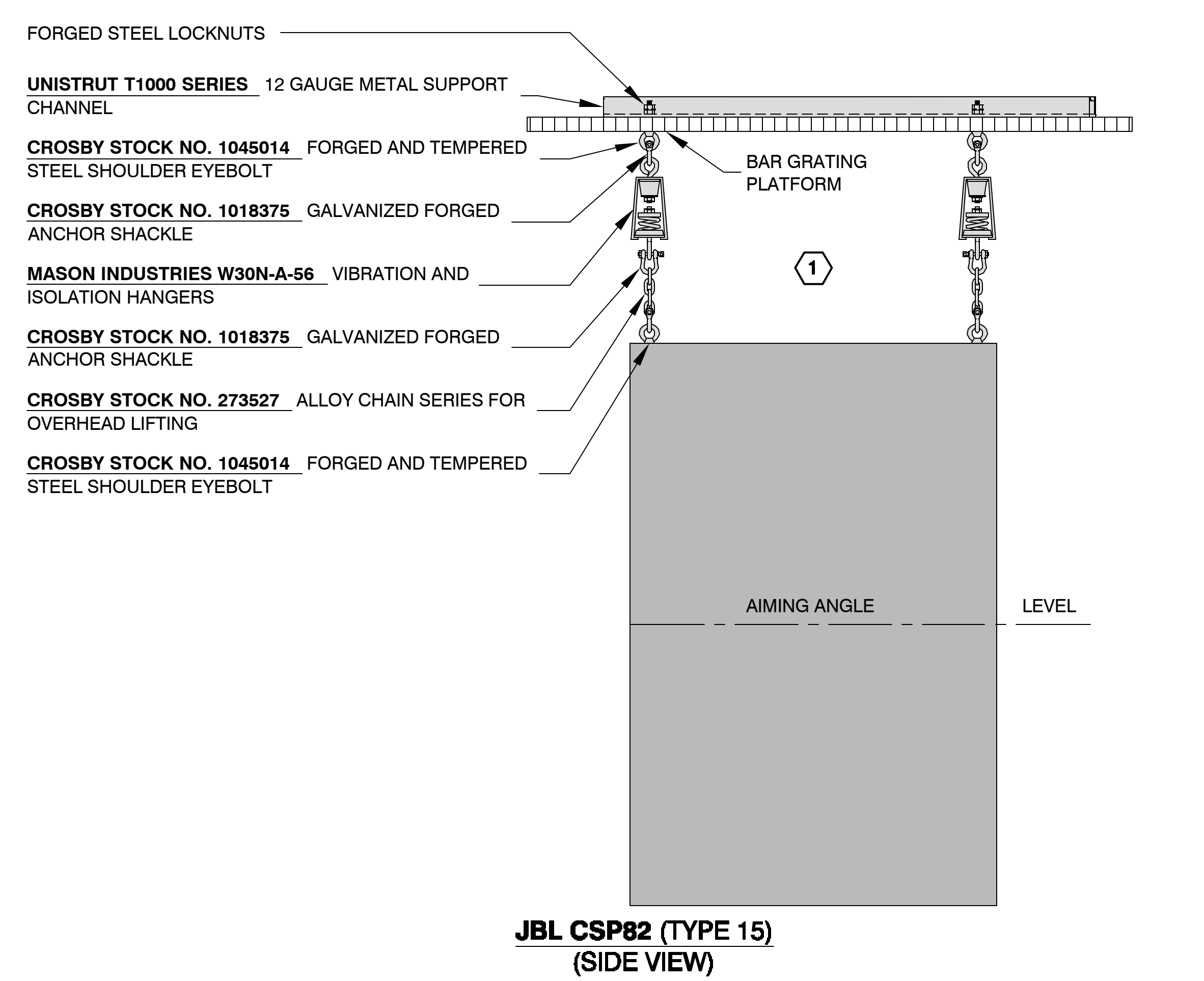
**2 CENTER CLUSTER SIDE ELEVATIONS**  
AS3330 SCALE: 3/4" = 1'-0"



**JBL CST51DQ (TYPE 14)**  
(SIDE VIEW)

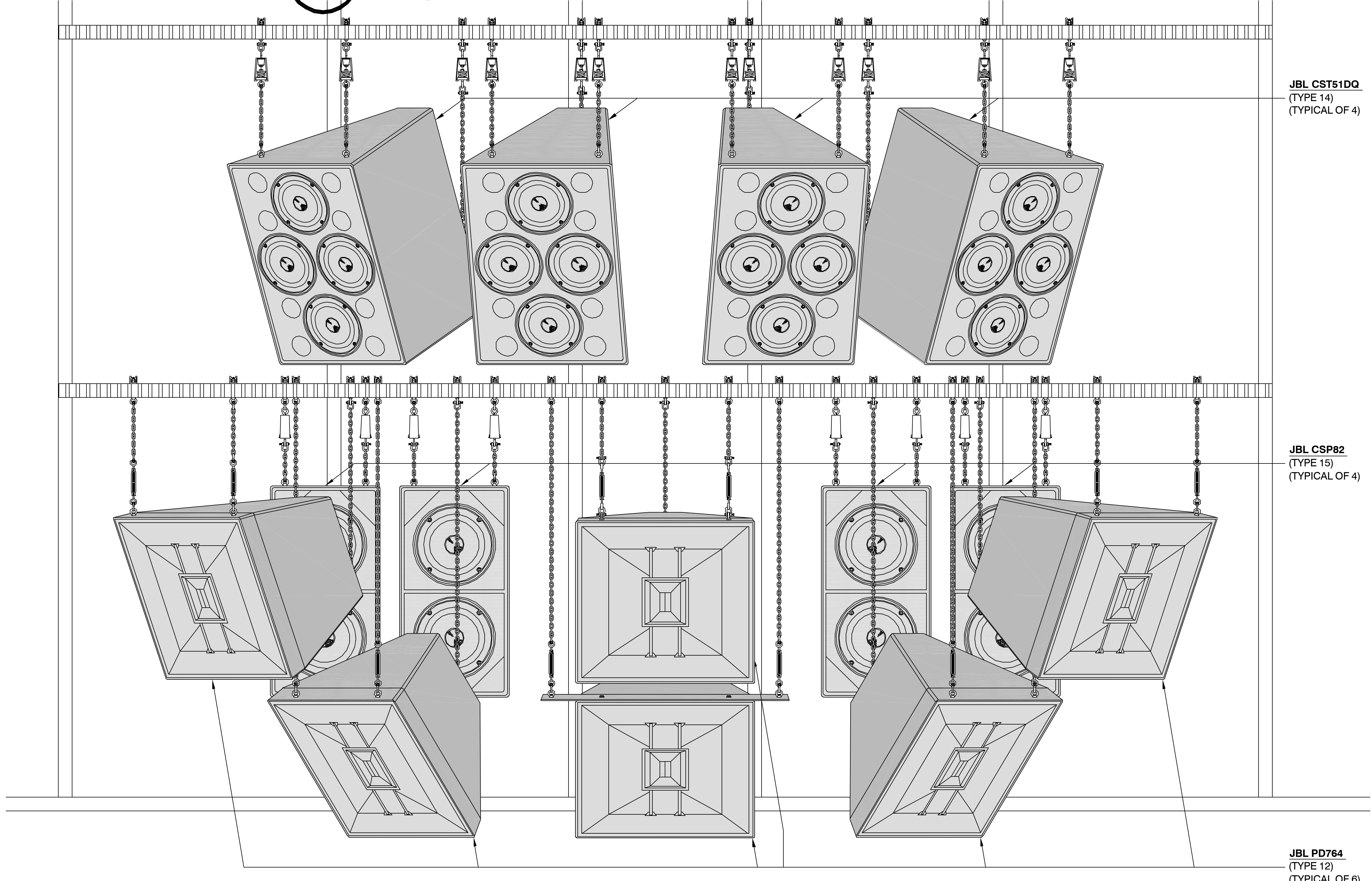


**JBL PD764 (TYPE 12)**  
(SIDE VIEW)



**JBL CSP82 (TYPE 15)**  
(SIDE VIEW)

**1 CONCEPTUAL CENTER CLUSTER FRONT ELEVATION**  
AS3330 SCALE: 1/2" = 1'-0"

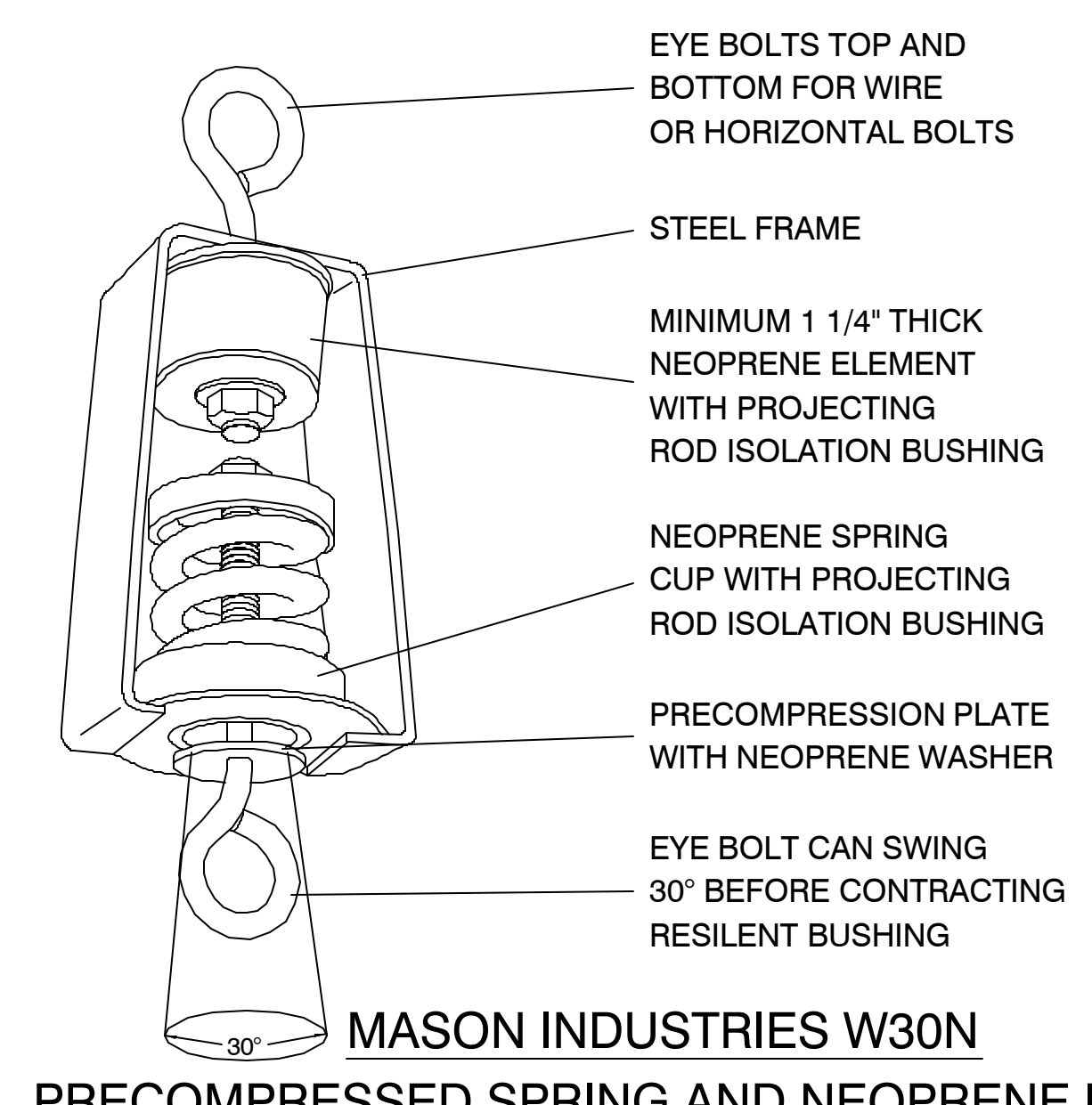
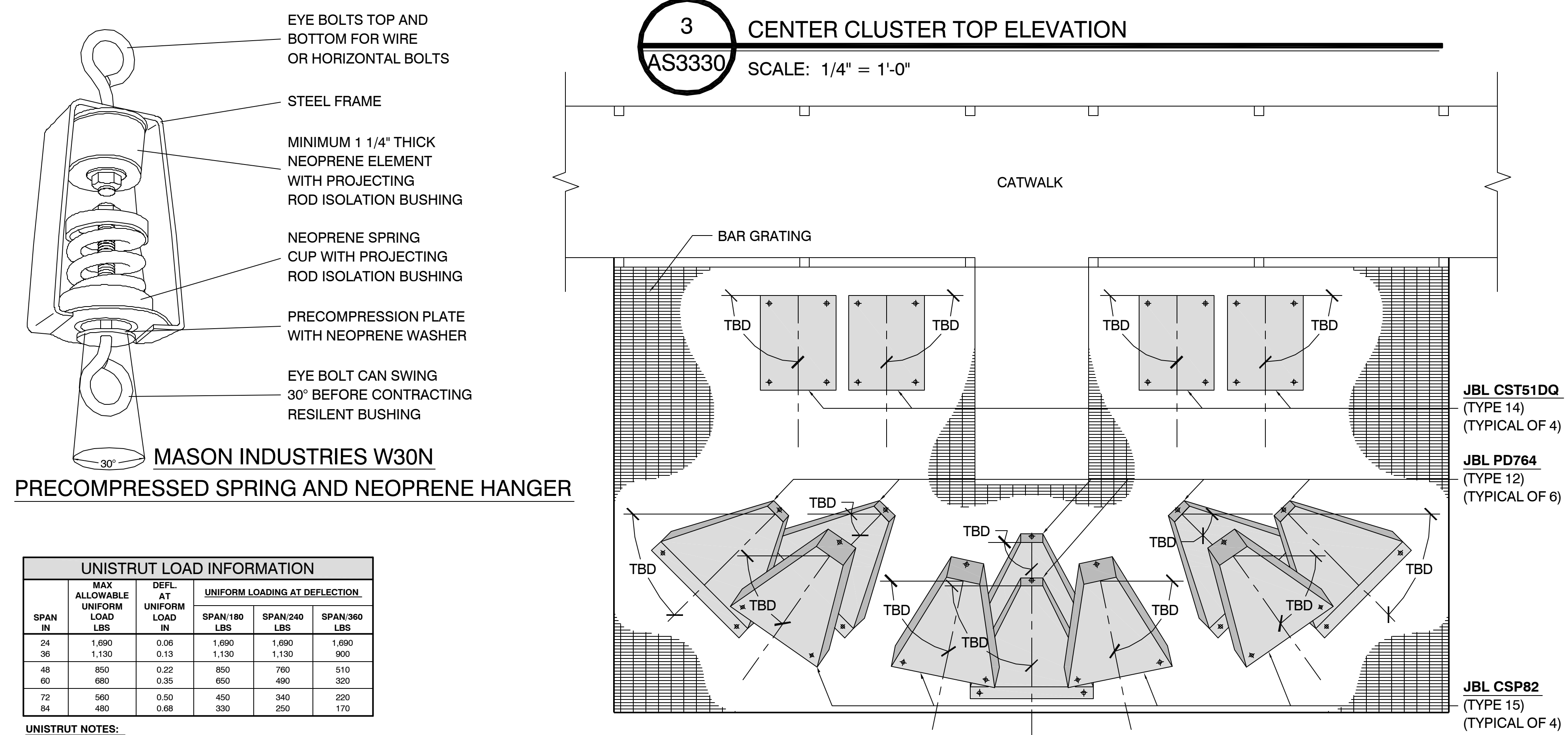


**JBL CST51DQ**  
(TYPE 14)  
(TYPICAL OF 4)

**JBL CSP82**  
(TYPE 15)  
(TYPICAL OF 4)

**JBL PD764**  
(TYPE 12)  
(TYPICAL OF 6)

**3 CENTER CLUSTER TOP ELEVATION**  
AS3330 SCALE: 1/4" = 1'-0"



**MASON INDUSTRIES W30N**  
PRECOMPRESSED SPRING AND NEOPRENE HANGER

UNISTRUT LOAD INFORMATION					
SPAN IN	MAX ALLOWABLE UNIFORM LOAD LBS	DEFL AT UNIFORM LOAD IN	UNIFORM LOADING AT DEFLECTION:		
			SPAN=180 LBS	SPAN=240 LBS	SPAN=360 LBS
24	1,690	0.36	1,690	1,690	1,690
36	1,130	0.53	1,130	1,130	850
48	850	0.72	850	790	510
60	680	0.93	650	490	320
72	560	1.17	450	340	220
84	480	1.44	300	220	170

UNISTRUT NOTES:  
1. ABOVE LOADS INCLUDE THE WEIGHT OF THE MEMBER. THIS WEIGHT MUST BE DEDUCTED TO ARRIVE AT THE NET ALLOWABLE LOAD THE BEAM WILL SUPPORT.  
2. LONG SPAN BEAMS SHOULD BE SUPPORTED IN SUCH A MANNER AS TO PREVENT ROTATION AND TWIST.  
3. ALLOWABLE UNIFORMLY DISTRIBUTED LOADS ARE LISTED FOR VARIOUS SIMPLE SPANS. THAT IS, A BEAM ON TWO SUPPORTS. IF LOAD IS CONCENTRATED AT THE CENTER OF THE SPAN, MULTIPLY LOAD FROM THE TABLE BY 0.5 AND CORRESPONDING DEFLECTION BY 0.8.  
4. FOR PIERCED CHANNEL, BEAM LOAD VALUES IN THE TABLES ARE MULTIPLIED BY THE FOLLOWING FACTOR:

THREAD DIAMETER & TAKE UP (IN)	STOCK NO.	WORKING LOAD LIMIT** (Lbs.)	WEIGHT EACH (Lbs.)
1/4 x 4	1031202	300	29
5/16 x 4-1/2	1031270	800	45
3/8 x 6	1031298	1200	76
1/2 x 6	1031314	2200	154
1/2 x 12	1031350	2200	214
5/8 x 6	1031379	3500	240
5/8 x 12	1031412	3500	342
3/4 x 6	1031450	5000	379

CROSBY EYE & EYE TURNBUCKLES			
THREAD DIAMETER & TAKE UP (IN)	STOCK NO.	WORKING LOAD LIMIT** (Lbs.)	WEIGHT EACH (Lbs.)
1/4 x 2	1045014	650	60
1/4 x 4	1045032	650	910
5/16 x 2-1/4	1045050	1200	1250
5/16 x 4-1/4	1045079	1200	1880
3/8 x 2-1/2	1045096	1500	3140
3/8 x 4-1/2	1045112	1500	2530
1/2 x 3-1/4	1045130	2000	4260
1/2 x 6	1045158	2600	5680
5/8 x 4	1045176	3200	6660
5/8 x 6	1045194	5200	10240
3/4 x 4-1/2	1045210	7200	14450
3/4 x 6	1045228	7200	16750

CROSBY SPECTRUM 8 ALLOY CHAIN					
CHAIN SIZE (IN)	SPEC. # DRUM STOCK NO.	FEET PER DRUM	MATERIAL SIZE (IN)	WORKING LOAD LIMIT** (Lbs.)	WEIGHT PER 100 FT. (Lbs.)
1/4	273527	500	.276	3500	72
5/16	273536	500	.343	4500	114
3/8	273545	500	.394	7100	148
1/2	273554	200	.512	13000	243
5/8	273563	200	.630	18100	351
3/4	273572	100	.787	28300	584
7/8	273581	100	.966	34200	705

CROSBY FORGED EYE BOLTS			
SHANK DIAMETER & LENGTH (IN)	G-277 STOCK NO. GALV.	WORKING LOAD LIMIT** (Lbs.)	WEIGHT PER 100 (Lbs.)
1/4 x 2	1045014	650	60
1/4 x 4	1045032	650	910
5/16 x 2-1/4	1045050	1200	1250
5/16 x 4-1/4	1045079	1200	1880
3/8 x 2-1/2	1045096	1500	3140
3/8 x 4-1/2	1045112	1500	2530
1/2 x 3-1/4	1045130	2000	4260
1/2 x 6	1045158	2600	5680
5/8 x 4	1045176	3200	6660
5/8 x 6	1045194	5200	10240
3/4 x 4-1/2	1045210	7200	14450
3/4 x 6	1045228	7200	16750

SPEAKER CABINET INFORMATION			
	JBL CST51DQ	JBL PD764	JBL CSP-82
NET WEIGHT	275 Lbs	215 Lbs	180 Lbs
FINISH COLOR	BLACK	BLACK	BLACK
DIMENSIONS	H = 48.25 IN W = 33.5 IN D = 31.5 IN	H = 39.0 IN W = 30.0 IN D = 34.75 IN	H = 46.0 IN W = 23.88 IN D = 30.0 IN

**GENERAL NOTES:**

1. CHAIN LENGTHS MAY VARY BASED ON TECHNICIANS JUDGEMENT IN THE FIELD AT TIME OF INSTALLATION.

2. THE SPEAKERS MAY HAVE TO BE ADJUSTED IN THE FIELD BY TECHNICIANS AS FAR AS THEIR EXACT PLACEMENT, BUT THE AIMING ANGLES AND THE HARDWARE USED TO HANG THEM WILL ALL STAY THE SAME.

**STRUCTURAL STAMP**

PROJECT

SHEET TITLE

**CENTER CLUSTER ELEVATIONS, DETAILS & SCHEDULES**

DATE: 06-29-05

DRAWN BY: RMH

CHECKED BY: -

REVISIONS

DATE	BY	CKD

JOB#: XXXX

**AS3330**